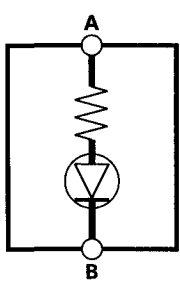
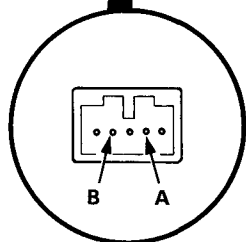
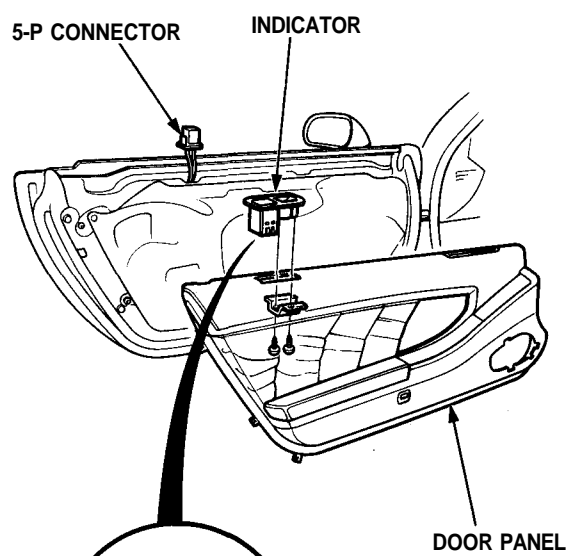


Security Alarm System

Indicator Replacement

1. Remove the door panel (see [section 20](#)).
2. Remove the two screws from the indicator.
3. Remove the indicator from the door panel.



Trunk Key Cylinder Switch Test

1. Open the trunk lid and remove the trunk rear panel.
2. Disconnect the 2-P connector from the trunk key cylinder switch.
3. Check continuity at the switch connector terminals.
 - There should be continuity between the terminals when the trunk lock is turned to UNLOCK with the key.
 - There should be no continuity when the lock is released.

