



Troubleshooting Flowchart – Engine Control Module (ECM)

Malfunction Indicator Lamp (MIL) never comes on (even for two seconds) after ignition is turned on.

Is the low oil pressure light on?

NO

Inspect No. 5 (10 A) fuse in the under-dash fuse box.

YES

Turn the ignition switch OFF.

Is the fuse OK?

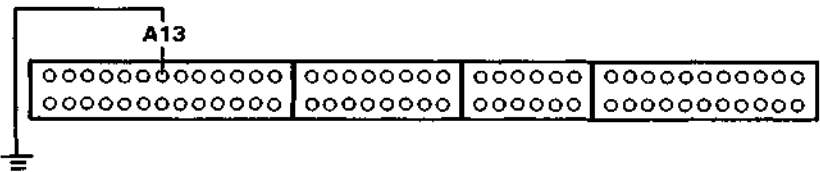
NO

Replace the fuse.

Connect the test harness between the ECM and connectors (see page 11-37).

Repair open in YEL wire between No. 5 (10 A) fuse and gauge assembly.

Connect A13 terminal to body ground.



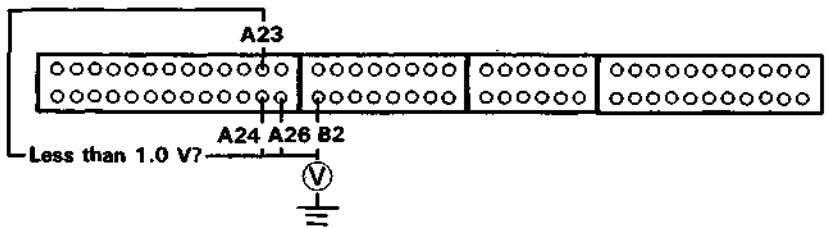
Turn the ignition switch ON.

Is the MIL on?

NO

– Replace the MIL bulb.
– Repair open in BLU wire between ECM (A13) and gauge assembly.

YES



Measure voltage between body ground and the following terminals individually: •A23, •A24, •A26, •B2.

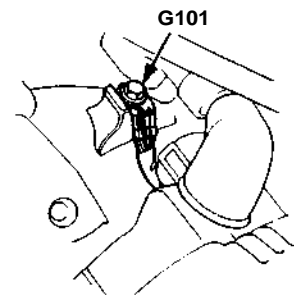
Is there less than 1.0 V?

NO

Repair open in wire between ECM and G101 (located at right middle of engine) that had more than 1.0 V.

YES

Substitute a known-good ECM and recheck. If symptom/indication goes away, replace the original ECM.



(cont'd)