

Idle Control System

Troubleshooting Flowchart — A/T Shift Position Signal

This signals the PGM-FI ECU when the transmission is in Neutral or Park.

Inspection of A/T Shift Position Signal.

Turn the ignition switch ON.

Observe the A/T shift indicator and select each position separately.

Does the indicator light properly?

NO

See A/T Shift Position Indicator Inspection.

YES

Turn the ignition switch OFF.

Connect the ECU test harness between the ECU and connector. Disconnect "B" connector from the engine wire harness only, not the ECU (page 11-21).

Turn the ignition switch ON.

Measure voltage between B7 (+) terminal and A26 (-) terminal.

Is there approx. 10 V?

NO

Substitute a known-good ECU and recheck. If prescribed voltage is now available, replace the original ECU.

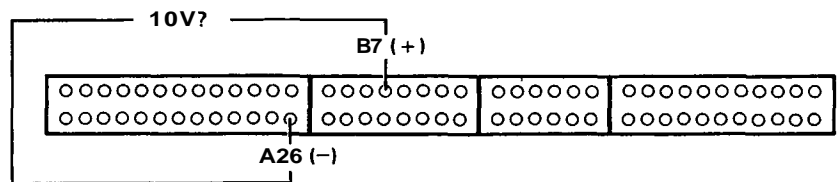
YES

Turn the ignition switch OFF.

Reconnect "B" connector to the engine wire harness.

Turn the ignition switch ON.

(To page 11-77)





(From page 11-76)

