

# Idle Control System

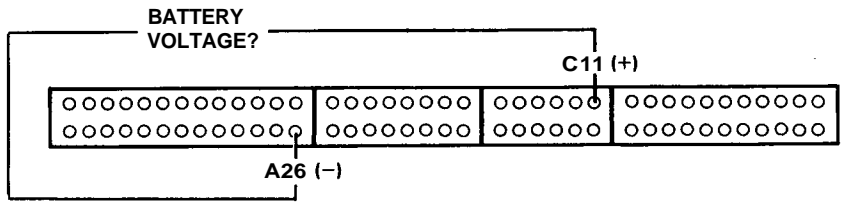
## Troubleshooting Flowchart — Starter Switch Signal

This signals the PGM-FI ECU when the engine is cranking.

**Inspection of Starter Switch Signal.**

Connect the ECU test harness between the ECU and connector (page 11-21).

Measure voltage between C11 (+) terminal and A26 (-) terminal with the ignition switch in the start position.



NOTE: Clutch pedal must be depressed on M/T models.

