

Chassis and Paint Codes

U.S.Model

Vehicle Identification Number

JH4NA116*ST000001

Manufacturer, Make and

Type of Vehicle

JH4: HONDA MOTOR CO., LTD.
ACURA, Passenger car

Line, Body and Engine Type

NA1: NSX/C30A1,
NSX-T/C30A1

Body Type and Transmission Type

- 1: 2-door Coupe/5-speed Manual
2-door Coupe (open top)/
5-speed Manual
- 2: 2-door Coupe/4-speed Automatic
2-door Coupe (open top)/
4-speed Automatic

Vehicle Grade (Series)

- 6: Coupe
- 8: Open Top

Check Digit

Model Year

S: 1995

Factory Code

T: Tochigi Factory in JAPAN (Takanezawa)

Serial Number

Transmission Number

SR8M-6100001

Transmission Type

- SR8M: 5-speed Manual Transmission
- MR9A: 4-speed Automatic Transmission

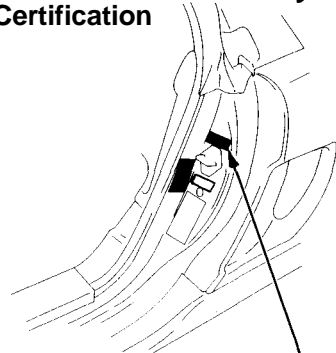
Serial Number

- SR8M: 6100001 ~
- MR9A: 4000001 ~

Paint Code

Paint Code	Color	Coupe	Open Top
G-70P	Charlotte Green Pearl		○
NH-547	Berlina Black	○	○
NH-565	Grand Prix White	○	
R-77	Formula Red	○	○
PB-73P	Midnight Purple Pearl		○

Vehicle Identification Number and Federal Motor Vehicle Safety Standard Certification

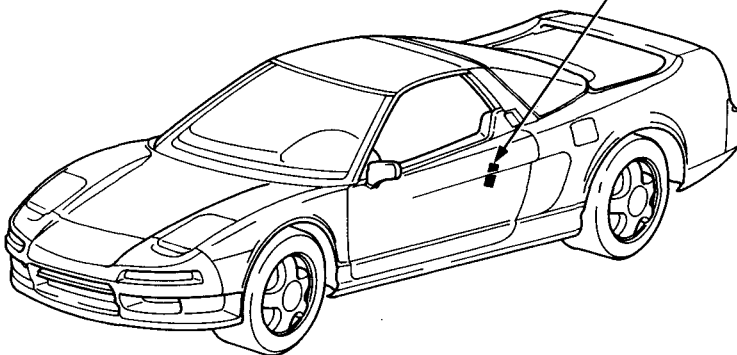


Engine Number

C30A1-5300001

Engine Type

Serial Number



Paint Code

COLOR
R-77