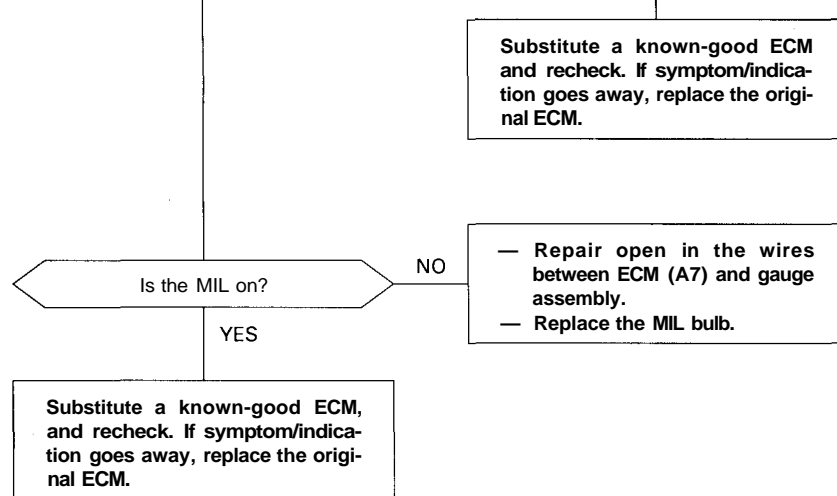
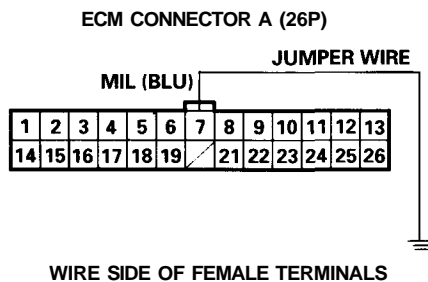
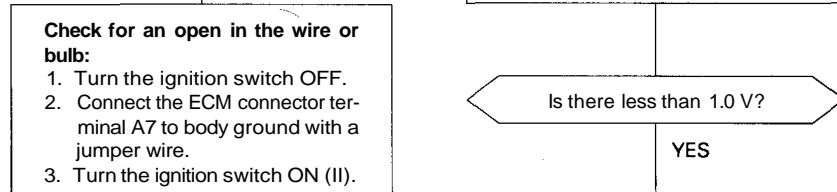
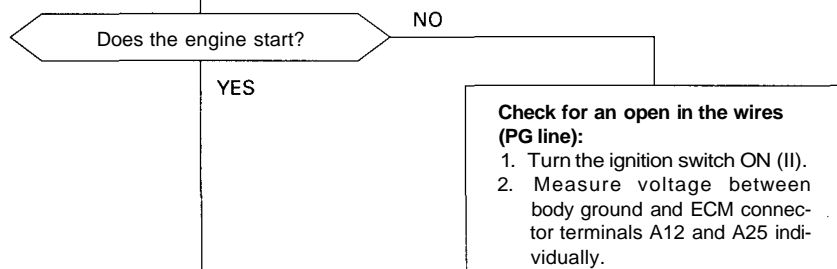
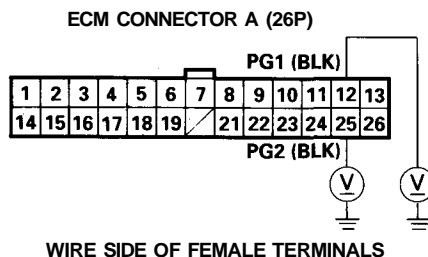
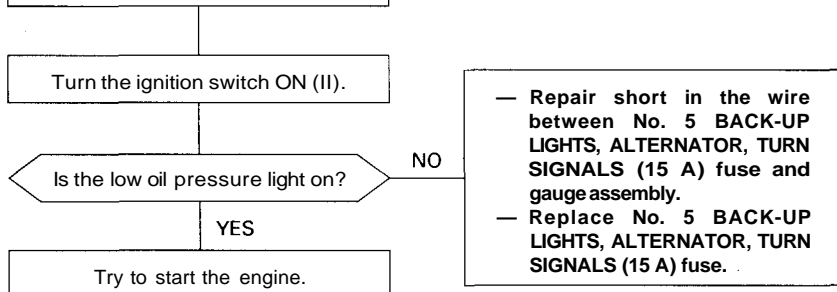




Engine Control Module (ECM)

The Malfunction Indicator Lamp (MIL) never comes on (even for two seconds) after ignition is turned ON (II).

NOTE: If this symptom is intermittent, check for a loose No. 5 BACK-UP LIGHTS, ALTERNATOR, TURN SIGNALS (15 A) fuse in the under-dash fuse/relay box, a poor connection at ECM terminal A7, or an intermittent open in the BLU wire between the ECM (A7) and the gauge assembly.



(cont'd)