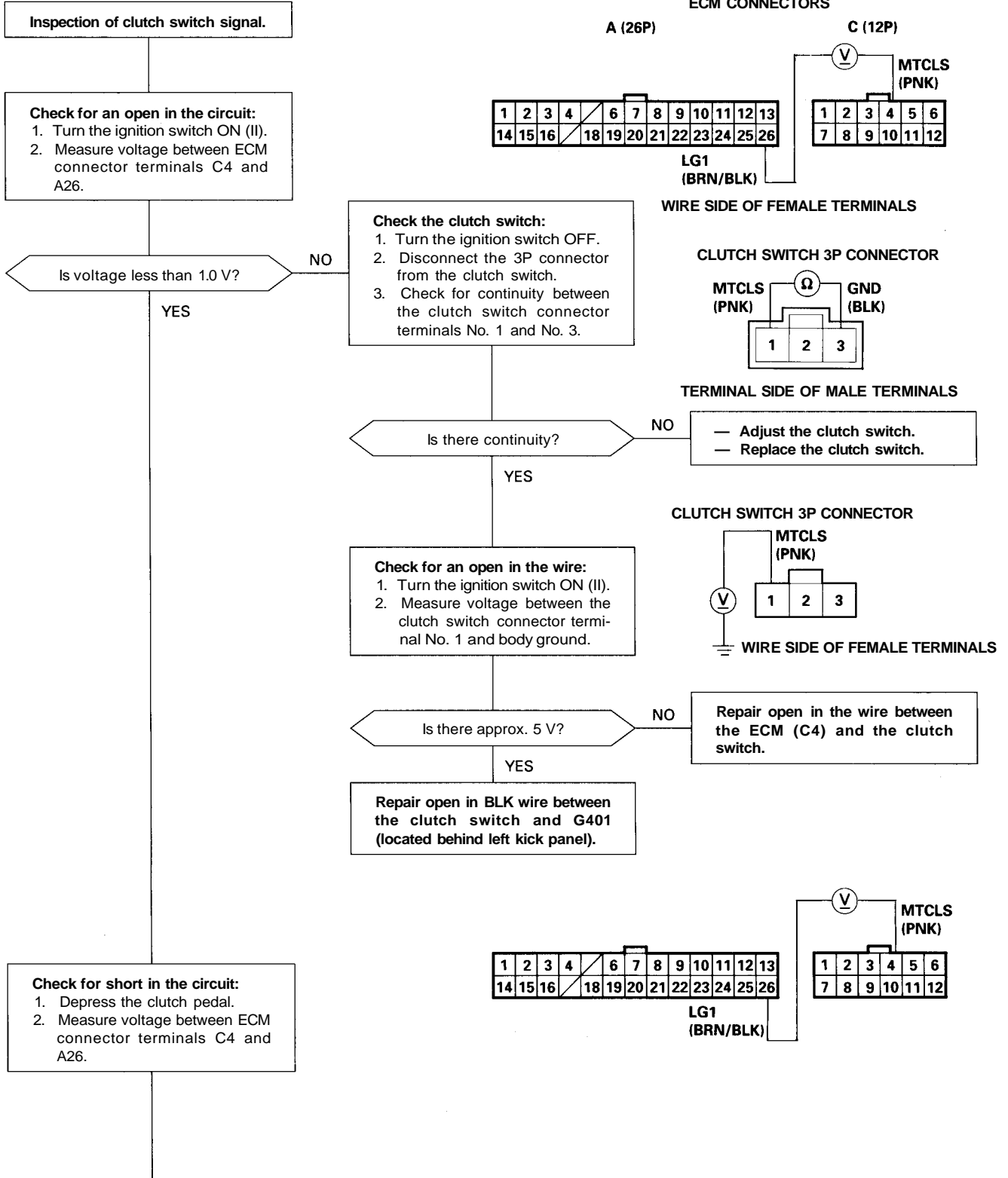


# Idle Control System

## Clutch Switch Signal (M/T)

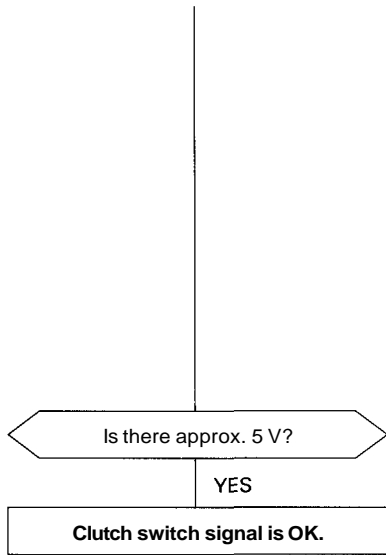
This signals the ECM when the clutch is engaged.



(To page 11-125)

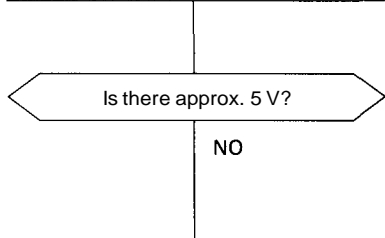


(From page 11-124)



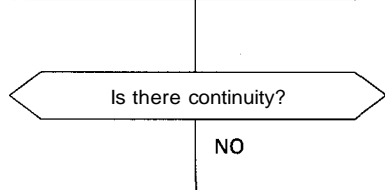
**Check the clutch switch:**

1. Turn the ignition switch OFF.
2. Disconnect the 3P connector from the clutch switch.
3. Turn the ignition switch ON (II).
4. Measure voltage between ECM connector terminals C4 and A26 with the clutch pedal depressed.



**Check for a short in the wire:**

1. Turn the ignition switch OFF.
2. Disconnect the ECM connector C (12P) from the ECM.
3. Check for continuity between ECM connector terminal C4 and body ground.



**Substitute a known-good ECM and recheck. If prescribed voltage is now available, replace the original ECM.**

