

Integrated Control Unit

Input Test

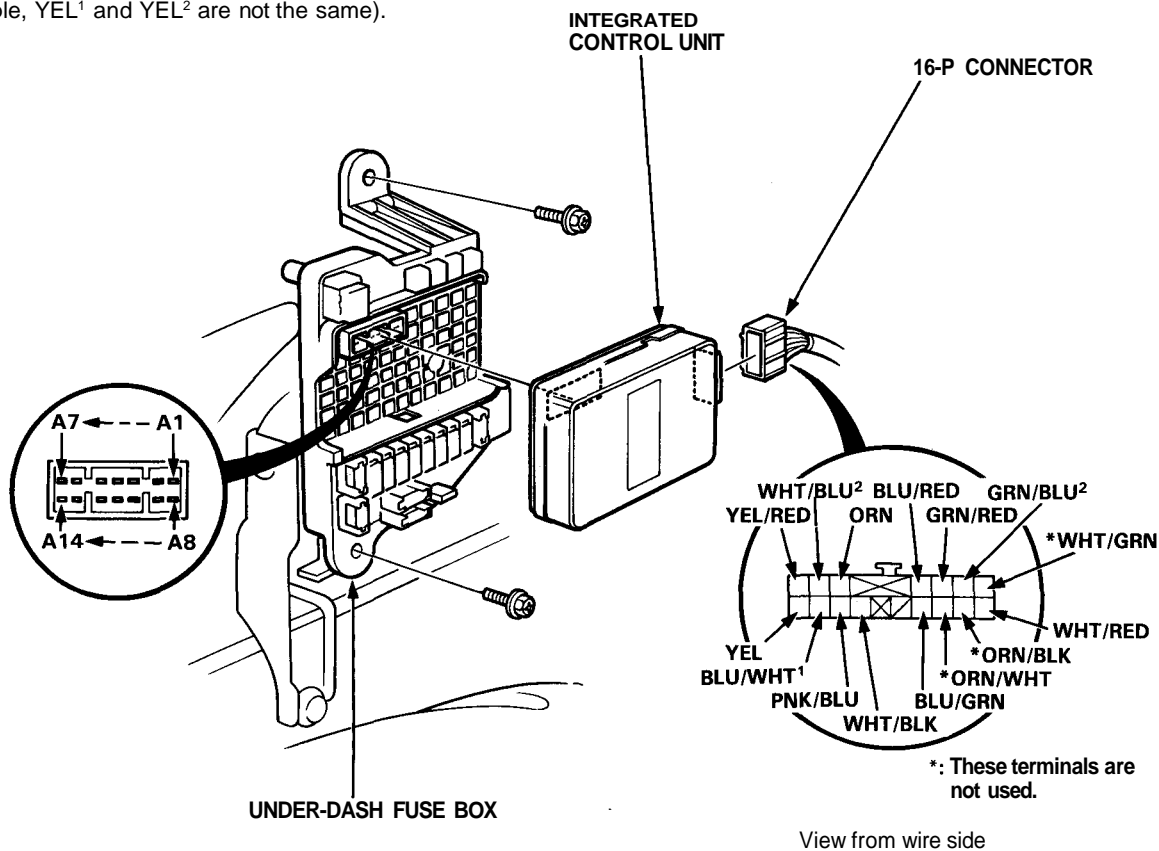
SRS components are located in this area. Review the SRS component locations, precautions, and procedures in the SRS [section 24](#) before performing repairs or service.

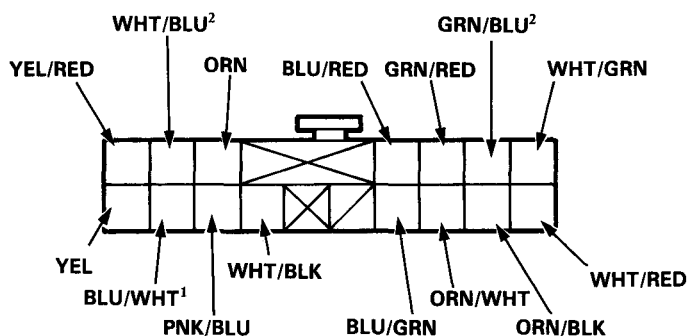
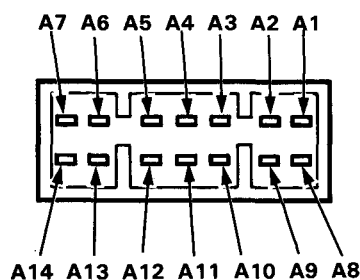
Remove the left kick panel cover, and the relay holder from its bracket, then disconnect the 16-P connector from the integrated control unit. Remove the integrated control unit from the under-dash fuse box.

Inspect the connector and socket terminals to be sure they are all making good contact.

- If the terminals are bent, loose, or corroded, repair them as necessary, and recheck the system.
- If the terminals look OK, make the following input tests at the connector.
 - If any test indicates a problem, find and correct the cause, then recheck the system.
 - If all the input tests prove OK, the control unit must be faulty; replace it.

NOTE: Different wires with the same color have been given a number suffix to distinguish them (for example, YEL¹ and YEL² are not the same).





View from wire side

Entry Light Timer System:

No.	Terminal	Test condition	Test: Desired result	Possible cause if result is not obtained
1	A8	Under all conditions	Check for continuity to ground: There should be continuity.	<ul style="list-style-type: none"> • Poor ground (G401, G402, G403) • An open in the wire
2	A9	Under all conditions	Check for voltage to ground: There should be battery voltage.	<ul style="list-style-type: none"> • Blown No. 34 (15 A) fuse • An open in the wire
3	WHT/BLK	Under all conditions	Attach to ground: Ignition key light and foot well lights should come on.	<ul style="list-style-type: none"> • Blown bulb or No. 34 (15 A) fuse • An open in the wire
4	GRN/BLU ²	Driver's door open	Check for voltage to ground: There should be 1 V or less.	<ul style="list-style-type: none"> • Faulty driver's door switch • Poor ground (G401, G402, G403) • An open in the wire

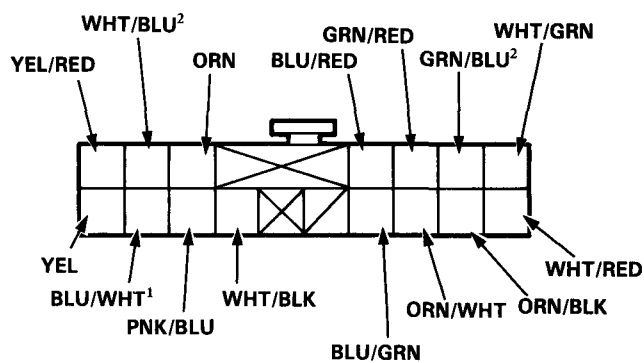
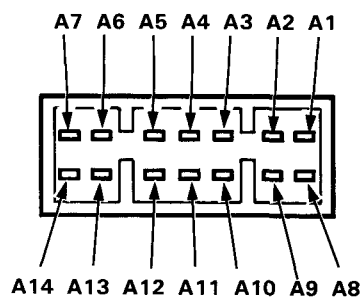
Key-in Reminder System:

No.	Terminal	Test condition	Test: Desired result	Possible cause if result is not obtained
1	A8	Under all conditions	Check for continuity to ground: There should be continuity.	<ul style="list-style-type: none"> • Poor ground (G401, G402, G403) • An open in the wire
2	A9	Under all conditions	Check for voltage to ground: There should be battery voltage.	<ul style="list-style-type: none"> • Blown No. 34 (15 A) fuse • An open in the wire
3	GRN/BLU ²	Driver's door open	Check for voltage to ground: There should be 1 V or less.	<ul style="list-style-type: none"> • Faulty driver's door switch • Poor ground (G401, G402, G403) • An open in the wire
4	BLU/GRN	Ignition key is inserted all the way into the ignition switch	Check for voltage to ground: There should be 1 V or less.	<ul style="list-style-type: none"> • Faulty ignition key switch • Poor ground (G401, G402, G403) • An open in the wire

(cont'd)

Integrated Control Unit

Input Test (cont'd)



View from wire side

Lights-on Reminder System:

No.	Terminal	Test condition	Test: Desired result	Possible cause if result is not obtained
1	A8	Under all conditions	Check for continuity to ground: There should be continuity.	<ul style="list-style-type: none"> • Poor ground (G401, G402, G403) • An open in the wire
2	A9	Under all conditions	Check for voltage to ground: There should be battery voltage.	<ul style="list-style-type: none"> • Blown No. 34 (15 A) fuse • An open in the wire
3	A5	Ignition switch ON (II)	Check for voltage to ground: There should be battery voltage.	<ul style="list-style-type: none"> • Blown No. 5 (15 A) fuse • An open in the wire
4	GRN/BLU ²	Driver's door open	Check for voltage to ground: There should be 1 V or less.	<ul style="list-style-type: none"> • Faulty driver's door switch • Poor ground (G401, G402, G403) • An open in the wire
5	A6	Headlight switch ON	Check for voltage to ground: There should be battery voltage.	<ul style="list-style-type: none"> • Blown No. 38 (15 A) fuse • Faulty Headlight switch • Faulty taillight relay • An open in the wire
6	ORN	Connect the A9 terminal to the ORN terminal	Check chime operation: Chime should activate each time the battery is connected.	<ul style="list-style-type: none"> • Faulty chime • Poor ground (G401, G402, G403) • An open in the wire

Seat Belt Reminder System:

No.	Terminal	Test condition	Test: Desired result	Possible cause if result is not obtained
1	A8	Under all conditions	Check for continuity to ground: There should be continuity.	<ul style="list-style-type: none"> • Poor ground (G401, G402, G403) • An open in the wire
2	A9	Under all conditions	Check for voltage to ground: There should be battery voltage.	<ul style="list-style-type: none"> • Blown No. 34 (15 A) fuse • An open in the wire
3	A5	Ignition switch ON (II)	Check for voltage to ground: There should be battery voltage.	<ul style="list-style-type: none"> • Blown No. 5 (15 A) fuse • An open in the wire
4	A13	Ignition switch ON (II) and driver's seat belt not buckled	Check for voltage to ground: There should be 1 V or less.	<ul style="list-style-type: none"> • Faulty seat belt switch • Poor ground (G401, G402, G403) • An open in the wire



Rear Window Defogger Timer System:

No.	Terminal	Test condition	Test: Desired result	Possible cause if result is not obtained
1	A8	Under all conditions	Check for continuity to ground: There should be continuity.	<ul style="list-style-type: none"> • Poor ground (G401, G402, G403) • An open in the wire
2	A9	Under all conditions	Check for voltage to ground: There should be battery voltage.	<ul style="list-style-type: none"> • Blown No. 34 (15 A) fuse • An open in the wire
3	A5	Ignition switch ON (II)	Check for voltage to ground: There should be battery voltage.	<ul style="list-style-type: none"> • Blown No. 5 (15 A) fuse • An open in the wire
4	WHT/RED	Defogger switch pushed	Check for continuity to ground: There should be continuity as the switch is pushed.	<ul style="list-style-type: none"> • Faulty defogger switch • Poor ground (G401, G402, G403) • An open in the wire
5	A10	Ignition switch ON (II)	Attach to ground: The rear window defogger should work and the defogger switch indicator light should come on.	<ul style="list-style-type: none"> • Blown No. 4 (15 A) fuse • Faulty defogger relay • Blown bulb • An open in the wire

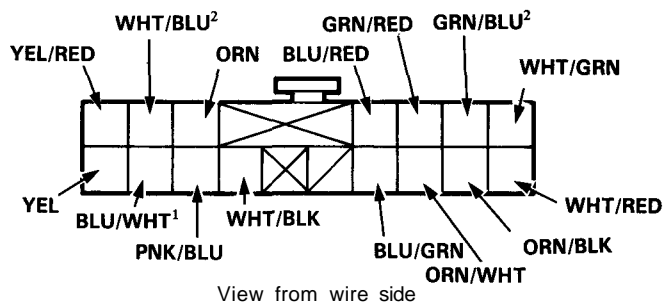
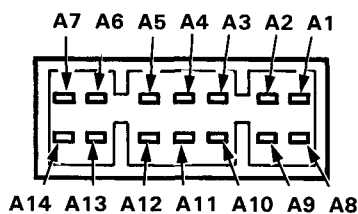
Oil Pressure Indicator System:

No.	Terminal	Test condition	Test: Desired result	Possible cause if result is not obtained
1	A8	Under all conditions	Check for continuity to ground: There should be continuity.	<ul style="list-style-type: none"> • Poor ground (G401, G402, G403) • An open in the wire
2	A9	Under all conditions	Check for voltage to ground: There should be battery voltage.	<ul style="list-style-type: none"> • Blown No. 34 (15 A) fuse • An open in the wire
3	A5	Ignition switch ON (II)	Check for voltage to ground: There should be battery voltage.	<ul style="list-style-type: none"> • Blown No. 5 (15 A) fuse • An open in the wire
4	WHT/BLU ²	Engine running	Check for voltage to ground: There should be battery voltage.	<ul style="list-style-type: none"> • Faulty charging system • An open in the wire
5	YEL/RED	Ignition switch OFF	Check for continuity to ground: There should be continuity.	<ul style="list-style-type: none"> • Faulty engine oil pressure switch • An open in the wire
		Ignition switch ON (II)	Check indicator light operation. If the light does not come on, attach the YEL/RED terminal to ground: The light should come on as the ignition switch is turned ON (II).	<ul style="list-style-type: none"> • Blown bulb • An open in the wire
		Start the engine	Check for voltage to ground: There should be battery voltage.	<ul style="list-style-type: none"> • Insufficient oil • Improper lubrication • Faulty engine oil pressure switch

(cont'd)

Integrated Control Unit

Input Test (cont'd)

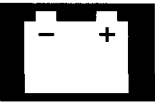


Side Marker Light Flasher System:

No.	Terminal	Test condition	Test: Desired result	Possible cause if result is not obtained
1	A8	Under all conditions	Check for continuity to ground: There should be continuity.	<ul style="list-style-type: none"> Poor ground (G401, G402, G403) An open in the wire
2	A9	Under all conditions	Check for voltage to ground: There should be battery voltage.	<ul style="list-style-type: none"> Blown No. 34 (15 A) fuse An open in the wire
3	A5	Ignition switch ON (II)	Check for voltage to ground: There should be battery voltage.	<ul style="list-style-type: none"> Blown No. 5 (15 A) fuse An open in the wire
4	A6	Headlight switch ON (II)	Check for voltage to ground: There should be battery voltage.	<ul style="list-style-type: none"> Blown No. 38 (15 A) fuse Faulty headlight switch Faulty taillight relay An open in the wire
5	A11	Ignition switch ON (II) and turn signal switch in left position	Check for voltage to ground: It should change from 0 – 12 – 0 V repeatedly.	<ul style="list-style-type: none"> Blown No. 46 (10 A) fuse Faulty turn signal/hazard relay An open in the wire
6	A3	Ignition switch ON (II) and turn signal switch in right position		
7	PNK/BLU	Connect the A9 terminal to the PNK/BLU (or BLU/WHT¹) terminal.	Check the front side marker lights: The left (or right) front side marker light should come on as the battery is connected.	<ul style="list-style-type: none"> Blown bulb Poor ground (G301) An open in the wire
8	BLU/WHT¹			

Power Window Key-off Timer System:

No.	Terminal	Test condition	Test: Desired result	Possible cause if result is not obtained
1	A8	Under all conditions	Check for continuity to ground: There should be continuity.	<ul style="list-style-type: none"> Poor ground (G401, G402, G403) An open in the wire
2	A9	Under all conditions	Check for voltage to ground: There should be battery voltage.	<ul style="list-style-type: none"> Blown No. 34 (15 A) fuse An open in the wire
3	A5	Ignition switch ON (II)	Check for voltage to ground: There should be battery voltage.	<ul style="list-style-type: none"> Blown No. 5 (15 A) fuse An open in the wire
4	GRN/BLU²	Driver's door open	Check for voltage to ground: There should be 1 V or less.	<ul style="list-style-type: none"> Faulty door switch Poor ground (G401, G402, G403) An open in the wire
5	GRN/RED	Passenger's door open		
6	A14	Connect the A9 terminal to the A14 terminal.	Check window operation: The power windows should work with the key OFF.	<ul style="list-style-type: none"> Faulty power window relay Poor ground (G201) An open in the wire



Combined Operation Wiper/Washer System:

No.	Terminal	Test condition	Test: Desired result	Possible cause if result is not obtained
1	A8	Under all conditions	Check for continuity to ground: There should be continuity.	<ul style="list-style-type: none">• Poor ground (G401, G402, G403)• An open in the wire
2	A9	Under all conditions	Check for voltage to ground: There should be battery voltage.	<ul style="list-style-type: none">• Blown No. 34 (15 A) fuse• An open in the wire
3	A5	Ignition switch ON (II)	Check for voltage to ground: There should be battery voltage.	<ul style="list-style-type: none">• Blown No. 5 (15 A) fuse• An open in the wire
4	BLU/RED	Ignition switch ON (II)	Check for voltage to ground: There should be battery voltage.	<ul style="list-style-type: none">• Blown No. 26 (40 A) fuse• Faulty wiper intermittent relay• An open in the wire
5	YEL	Ignition switch ON (II) and wiper switch at INT position	Check for voltage to ground: There should be battery voltage.	<ul style="list-style-type: none">• Blown No. 6 (7.5 A) fuse• Faulty wiper switch• An open in the wire
6	A4	Ignition switch ON (II) and washer switch pushed	Check for voltage to ground: There should be battery voltage.	<ul style="list-style-type: none">• Blown No. 6 (7.5 A) fuse• Faulty washer switch• An open in the wire
7	A1 and A2	Intermittent dwell time control ring turned	Check for resistance between the A1 and A2 terminals: It should vary from 0 to 28,000 ohms as the ring is turned.	<ul style="list-style-type: none">• Faulty intermittent dwell time con- troller• An open in the wire
8	A7	Ignition switch ON (II) and wiper switch OFF	Check for voltage to ground: There should be battery voltage.	<ul style="list-style-type: none">• Blown No. 26 (40 A) fuse• Faulty wiper motor (automatic- stop circuit)• An open in the wire