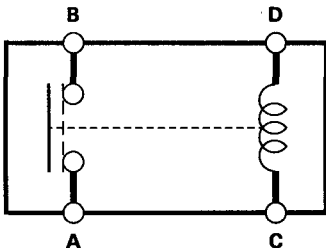
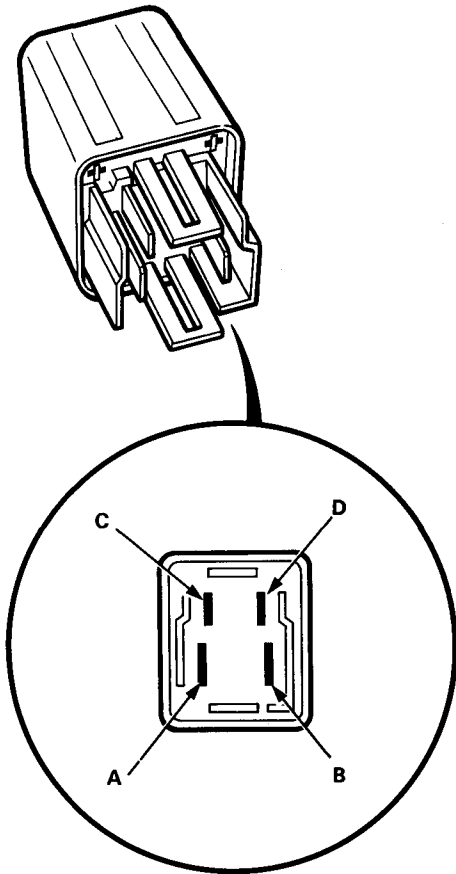




## Headlight Relay Test

1. Remove the headlight relay from the under-hood fuse/relay box.
2. Check continuity at the relay terminals.
  - There should be continuity between the C and D terminals.
  - There should be continuity between the A and B terminals when power and ground are connected to the C and D terminals.
  - There should be no continuity between the A and B terminals when power is disconnected.



## Dimmer Relay Test

1. Remove the dimmer relay from the under-hood fuse/relay box.
2. Check continuity at the relay terminals.
  - There should be continuity between the F and E terminals and between the B and C terminals.
  - There should be continuity between the A and C terminals when power and ground are connected to the E and F terminals.
  - There should be no continuity between the A and C terminals when power is disconnected.

