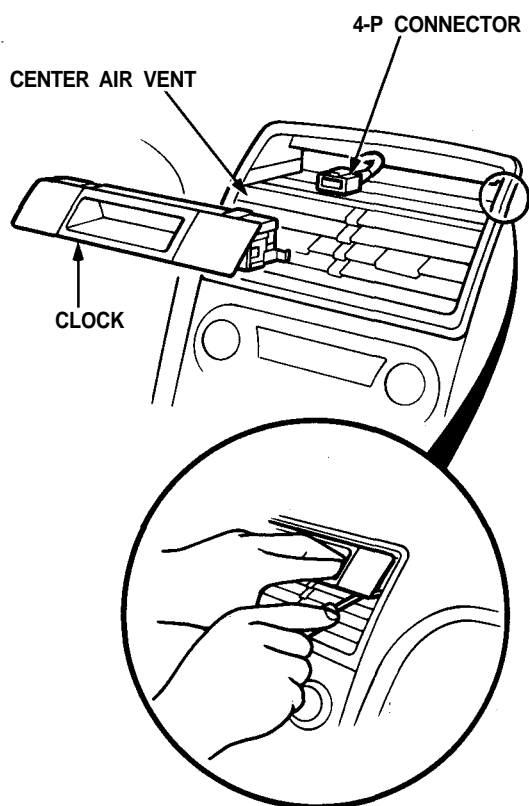




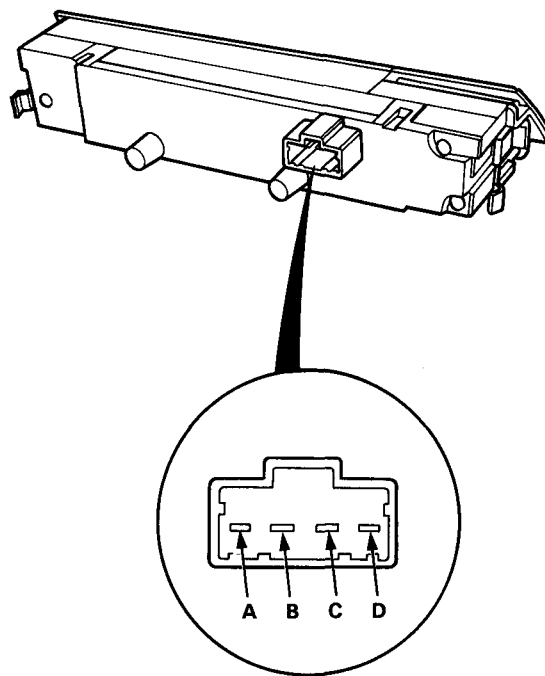
Removal

CAUTION: Be careful not to damage the center air vent or clock.

1. Pull the clock out with your fingers (if necessary, use a screwdriver).
2. Disconnect the 4-P connector from the clock.



Terminals



Terminal	Wire	Connects to
A	BLK	Ground
B	RED/BLK	Lights-on signal
C	WHT/YEL	Constant power (Time memory)
D	YEL	IG1 (Main clock power supply)