

Security Alarm System

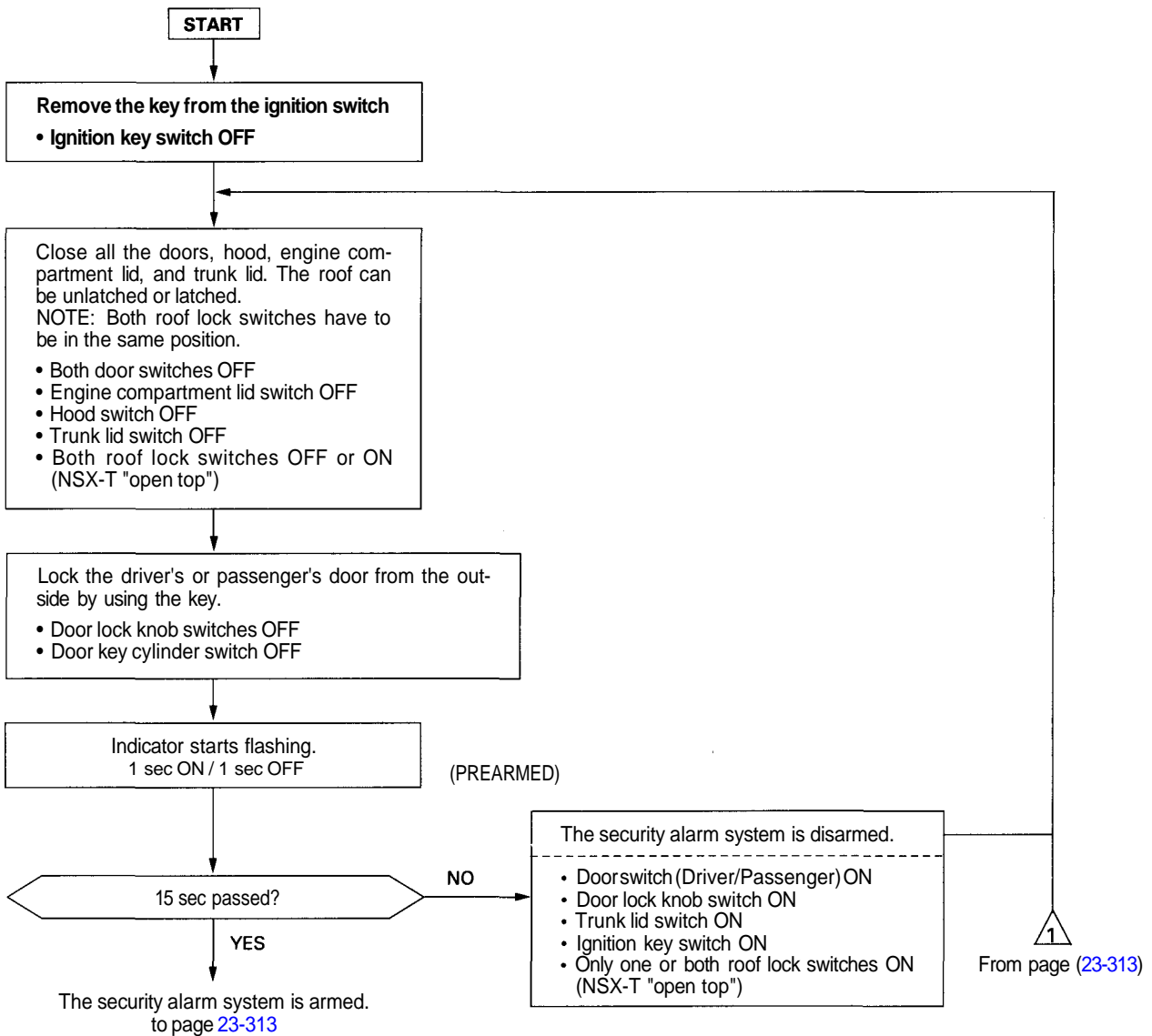
Description

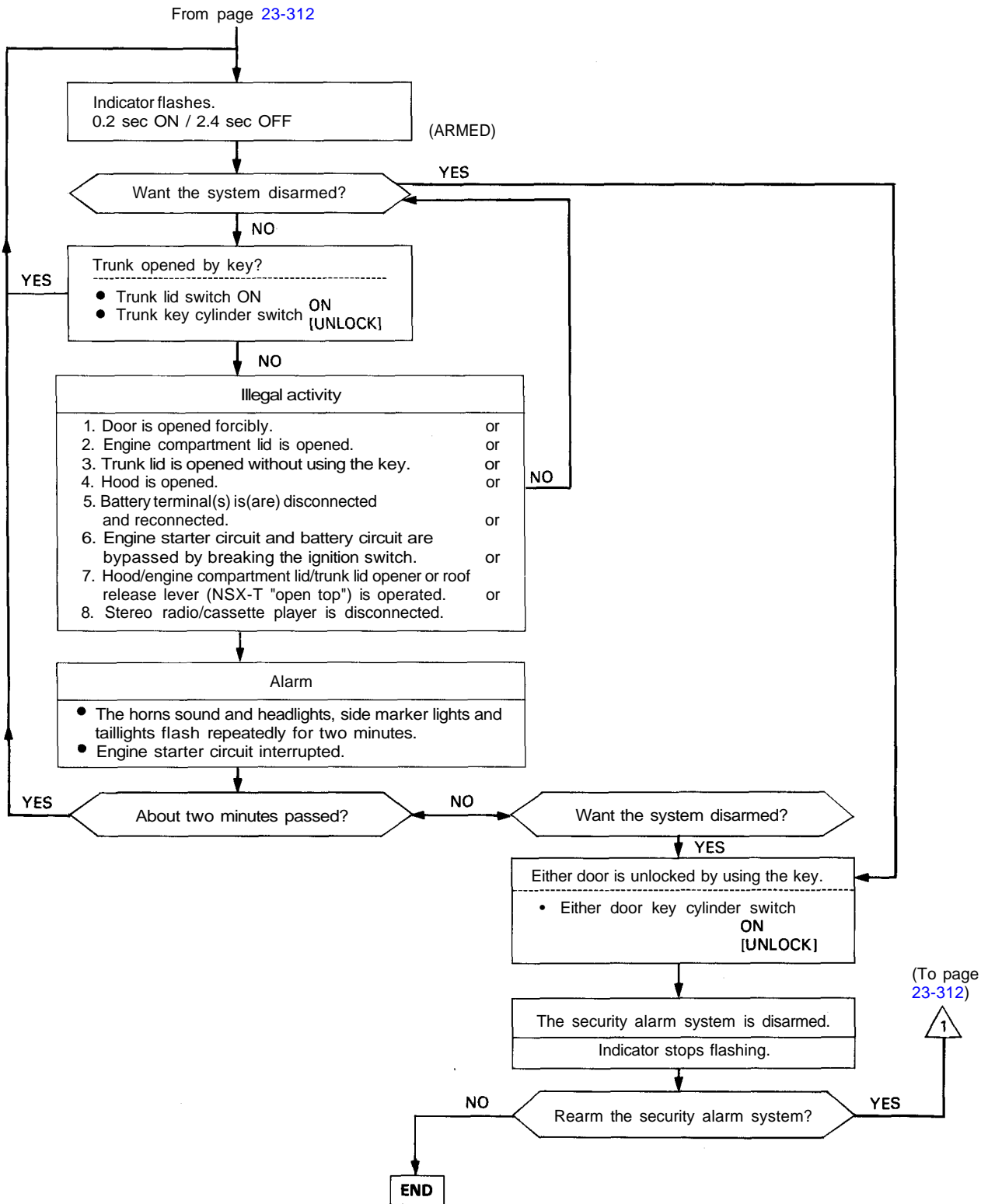
This system is activated automatically 15 seconds after everything has been closed and locked. The security alarm system indicator light located on the driver's door panel will flash after the doors are properly locked.

If any of the following conditions occur, the horns will sound, the headlights will pop up and flash, and the side marker lights, parking lights and taillights will flash for about two minutes, or until the system is disarmed by unlocking either door from the outside with the key.

- | | |
|---|--|
| <ul style="list-style-type: none"> ① Door is opened forcibly. ② Engine compartment lid is opened. ③ Trunk lid is opened without using the key. ④ Hood is opened. ⑤ Roof is unlatched (NSX-T "open top"). | <ul style="list-style-type: none"> ⑥ Battery terminal(s) is (are) removed and reconnected. ⑦ Engine starter circuit and battery circuit are bypassed by breaking the ignition switch. ⑧ Hood/engine compartment lid/trunk lid opener or roof release lever (NSX-T "open top") in the vehicle is operated. |
|---|--|

Flowchart of the security alarm system operation:





(To page 23-312)