

Idle Control System

Troubleshooting Flowchart — Clutch Switch Signal (M/T)

This signals the ECM when the clutch is engaged.

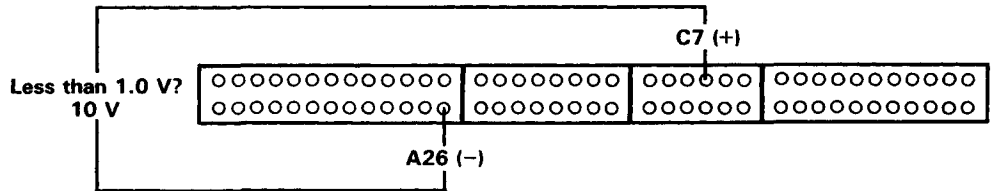
Inspection of clutch switch signal.

Connect the test harness between the ECM and connectors (see page 11-37).

Turn the ignition switch ON.

Measure voltage between C7 (+) terminal and A26 (-) terminal.

Is voltage less than 1.0 V?



YES

Depress the clutch pedal.

Measure voltage between C7 (+) terminal and A26 (-) terminal.

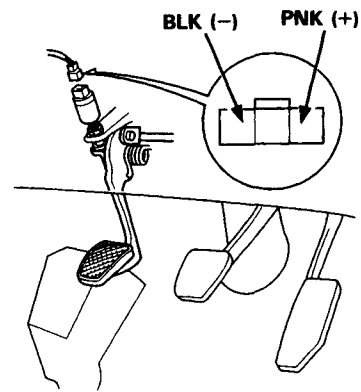
(To page 11-99)

NO

Turn the ignition switch OFF.

Disconnect the 3P connector from the clutch switch.

Check for continuity between the A terminal and C terminal on the clutch switch.



Does continuity exist?

NO

Replace the clutch switch.

YES

Turn the ignition switch ON.

Measure voltage between PNK (+) terminal and body ground.

Is there approx. 10 V?

NO

Repair open in PNK wire between ECM (C7) and the clutch switch.

YES

Repair open in BLK wire between the clutch switch and G401 (located behind left kick panel).

