

PGM-FI Control System

Troubleshooting Flowchart — ECU

Check Engine light never comes on (even for two seconds) after ignition is turned on.

Is the oil pressure light on?

YES

Turn the ignition switch OFF.

Connect the ECU test harness between the ECU and connector (page 11-21).

Connect A13 terminal to body ground.

Turn the ignition switch ON.

Is Check Engine light on?

YES

Measure voltage between body ground and the following terminals individually: ●A23, ●A24, ●A26, ●B2.

Is there less than 1V?

YES

Substitute a known-good ECU and recheck. If symptom/ indication goes away, replace the original ECU.

NO

Inspect No. 5 fuse.

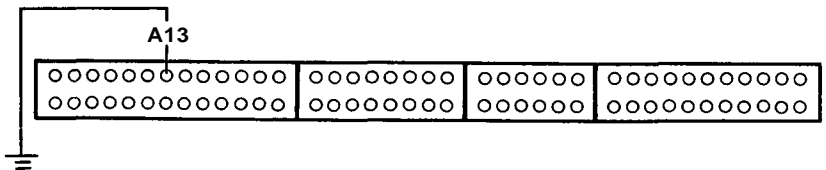
Is No. 5 fuse OK?

YES

Repair open in YEL between No. 5 fuse and gauge assembly.

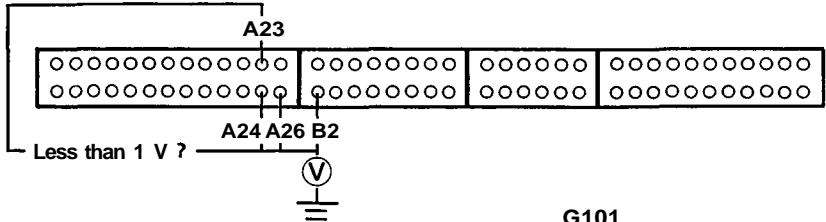
NO

Replace fuse.



- Replace the light bulb.
- Repair open in BLU wire between ECU (A13) and gauge assembly.

NO



Repair open in wire between ECU and intake manifold (G101) that had more than 1V.

NO

